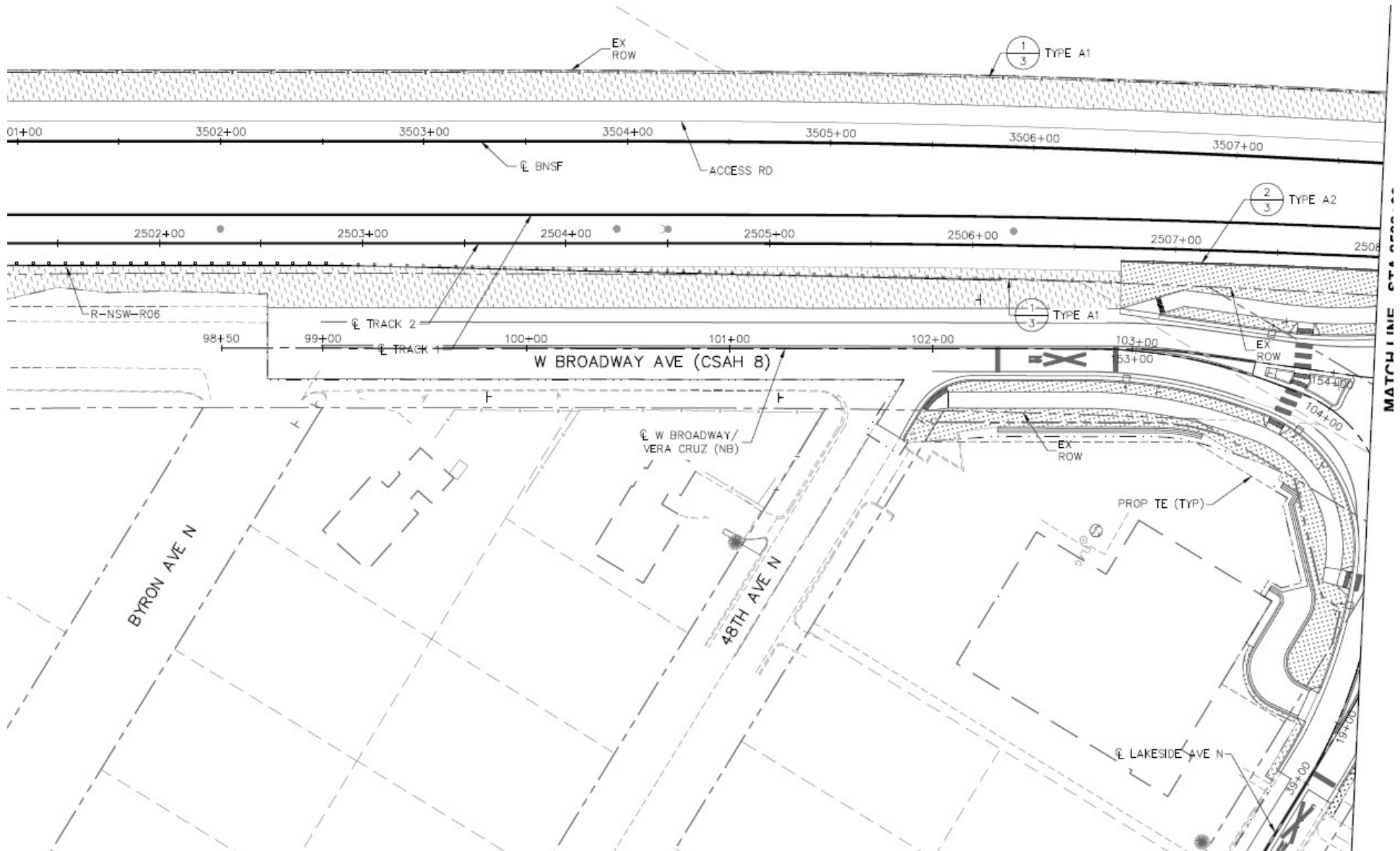




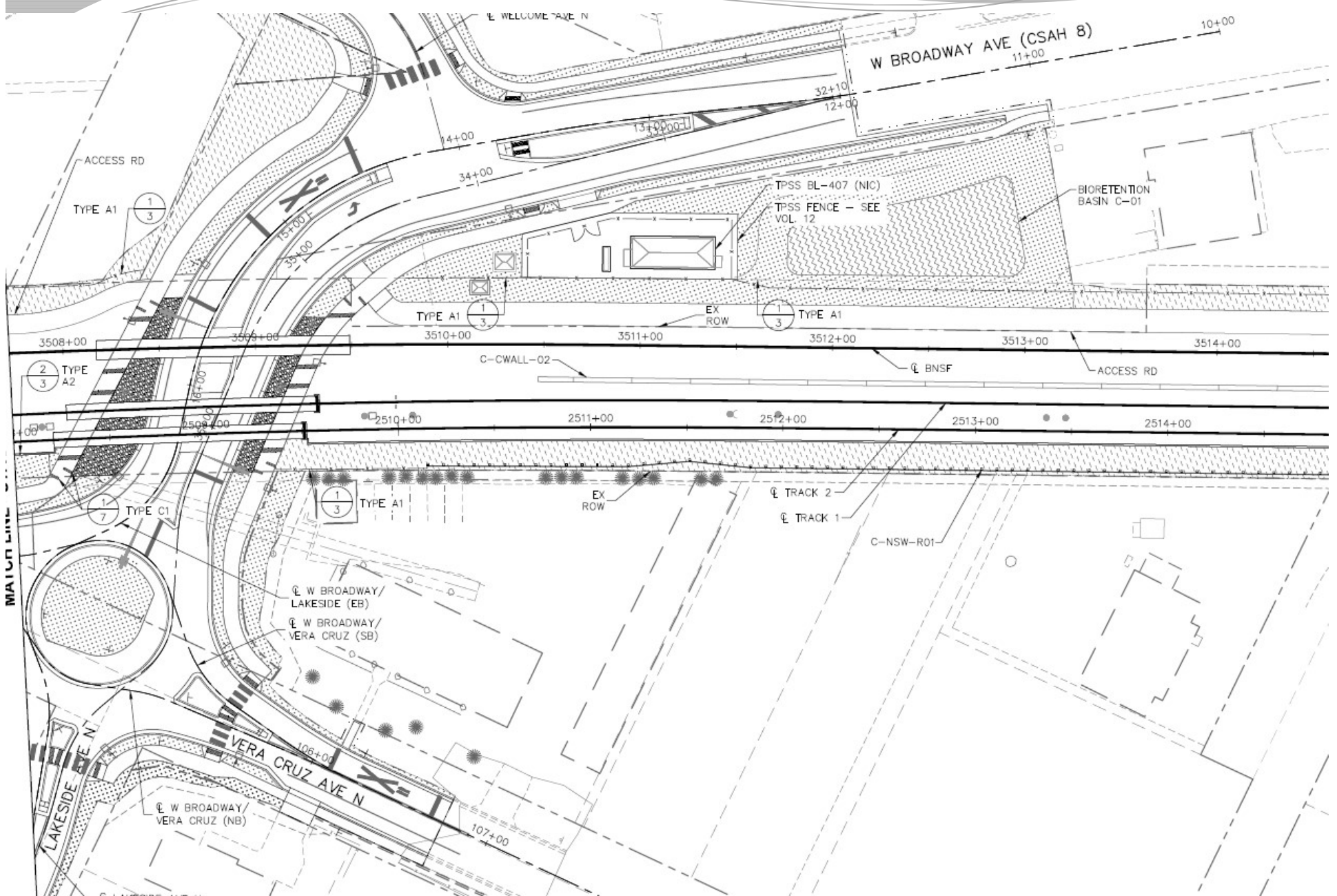
# **Blue Line Extension Update for City Council**

**January 16, 2018**

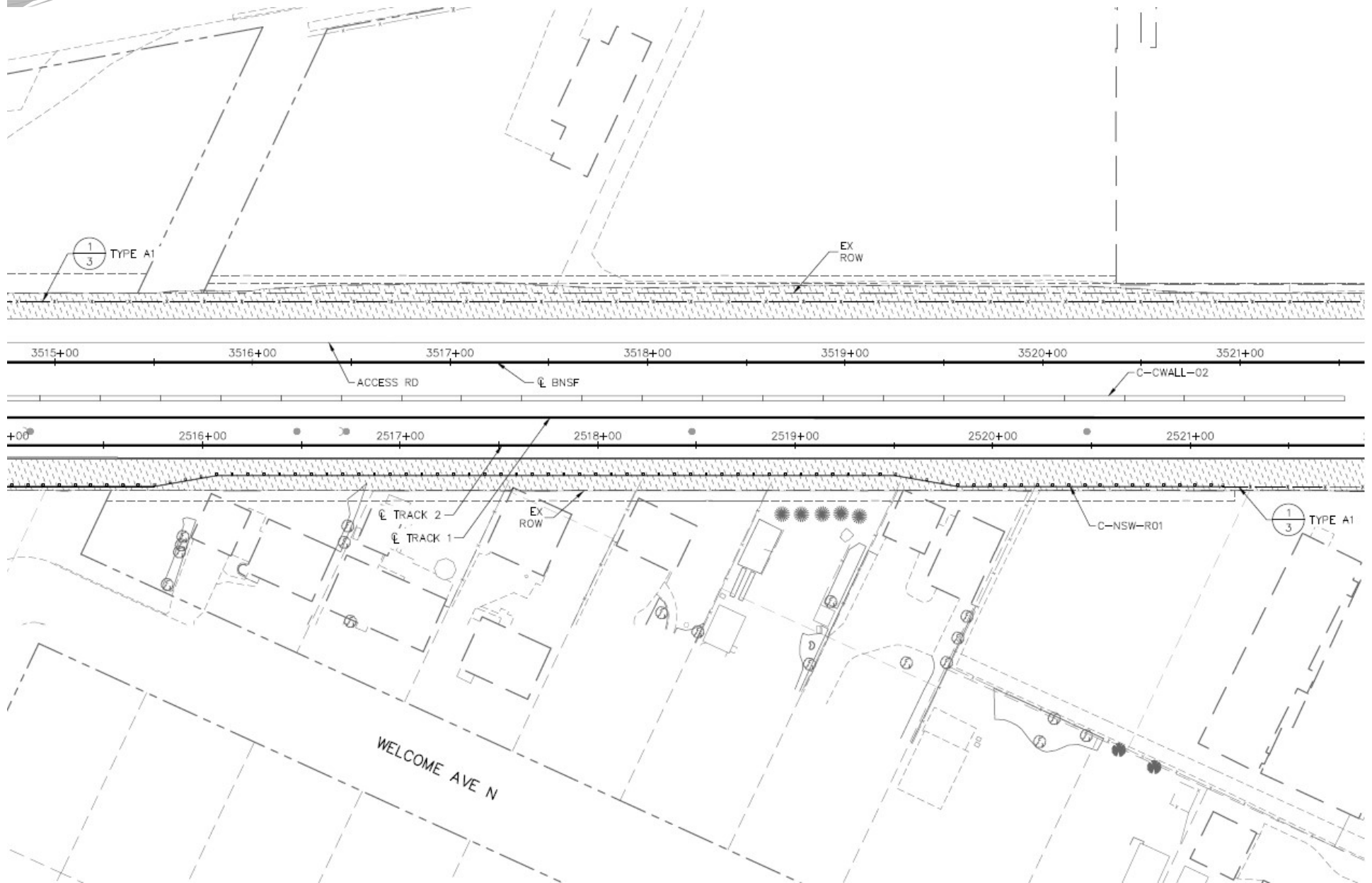
# 90% Plans – General Layout and Landscaping



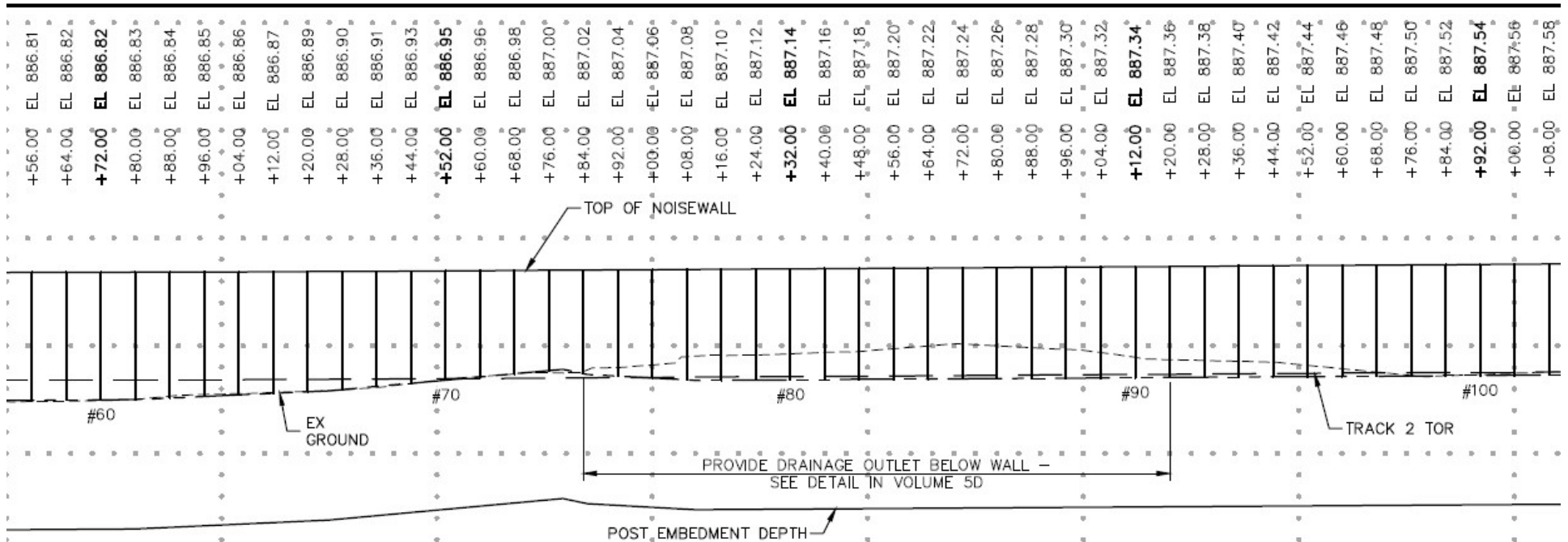
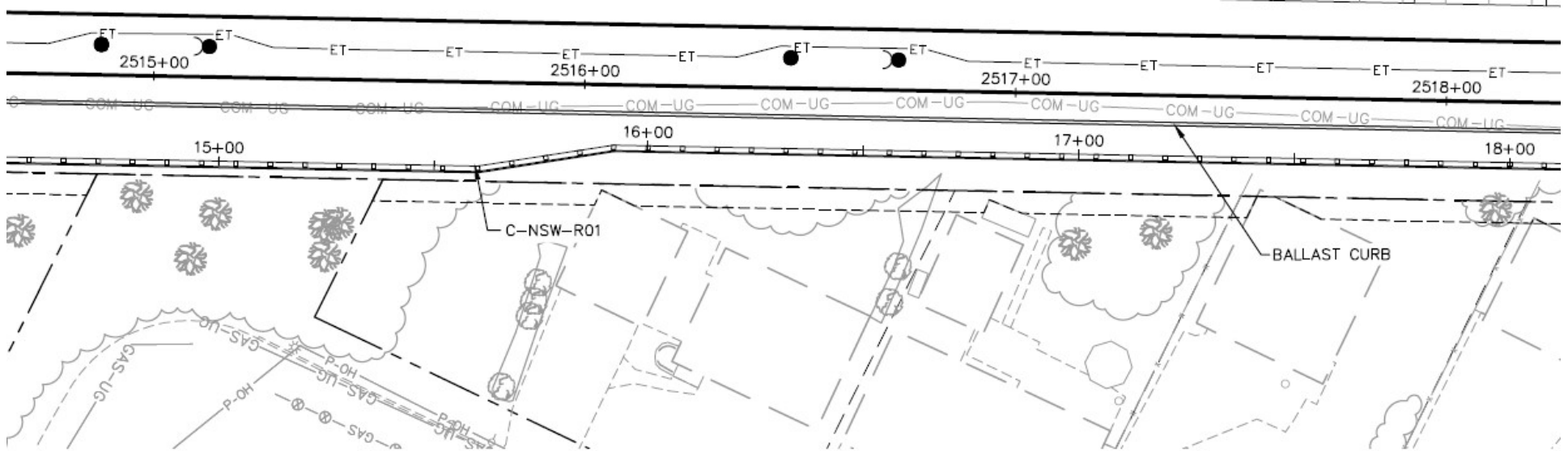
# 90% Plans – General Layout and Landscaping



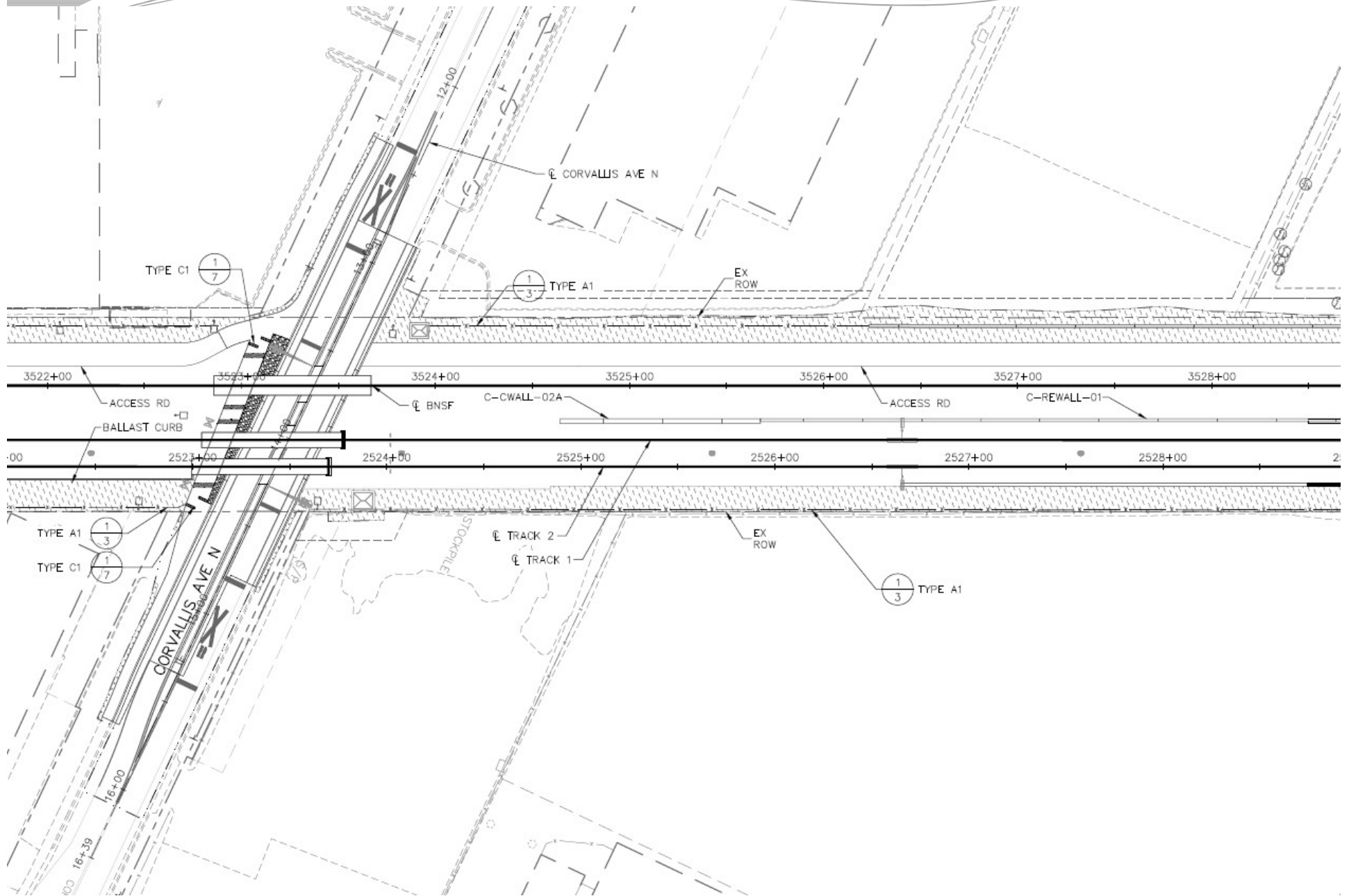
# 90% Plans – General Layout and Landscaping



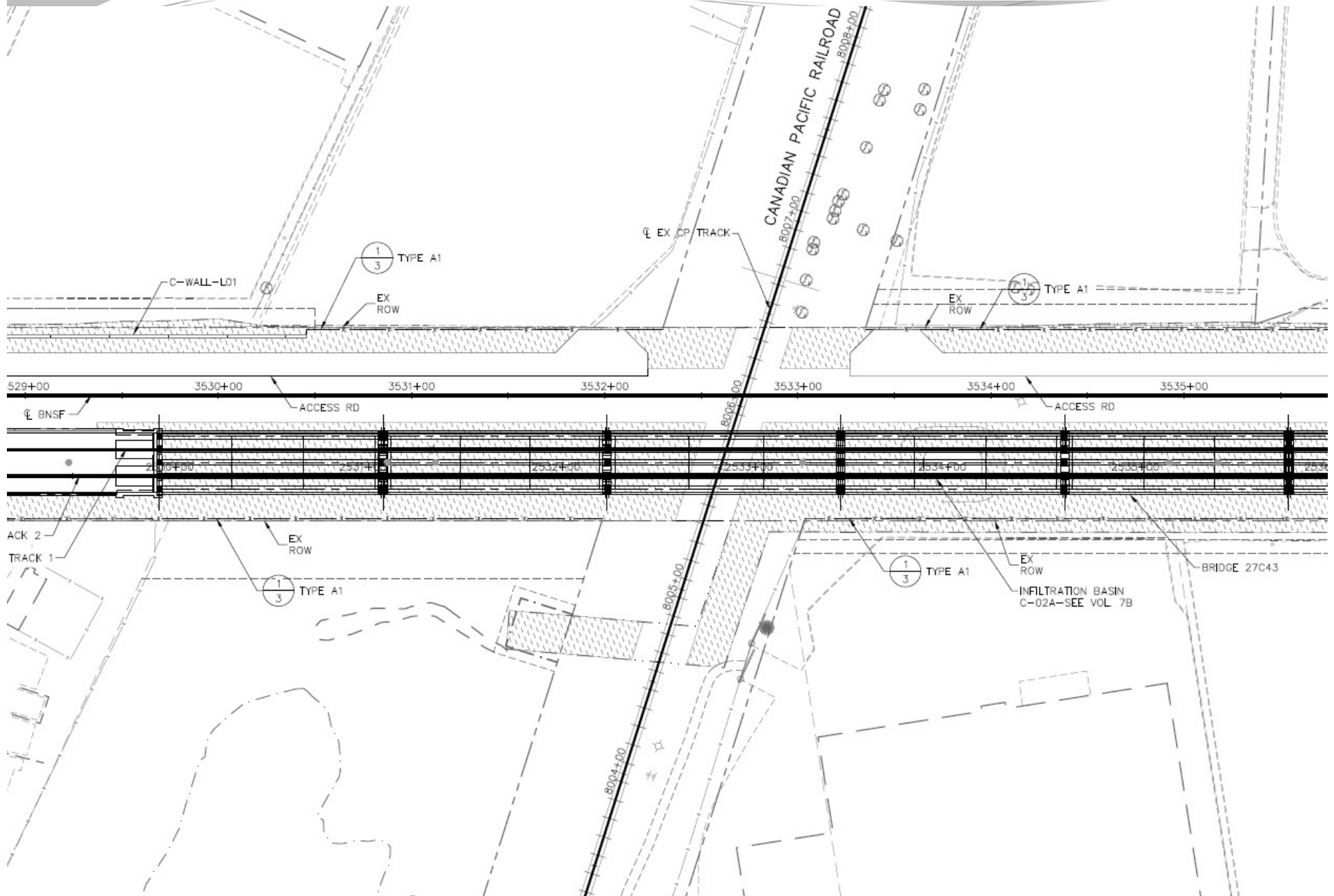
# 90% Plans – General Layout and Landscaping



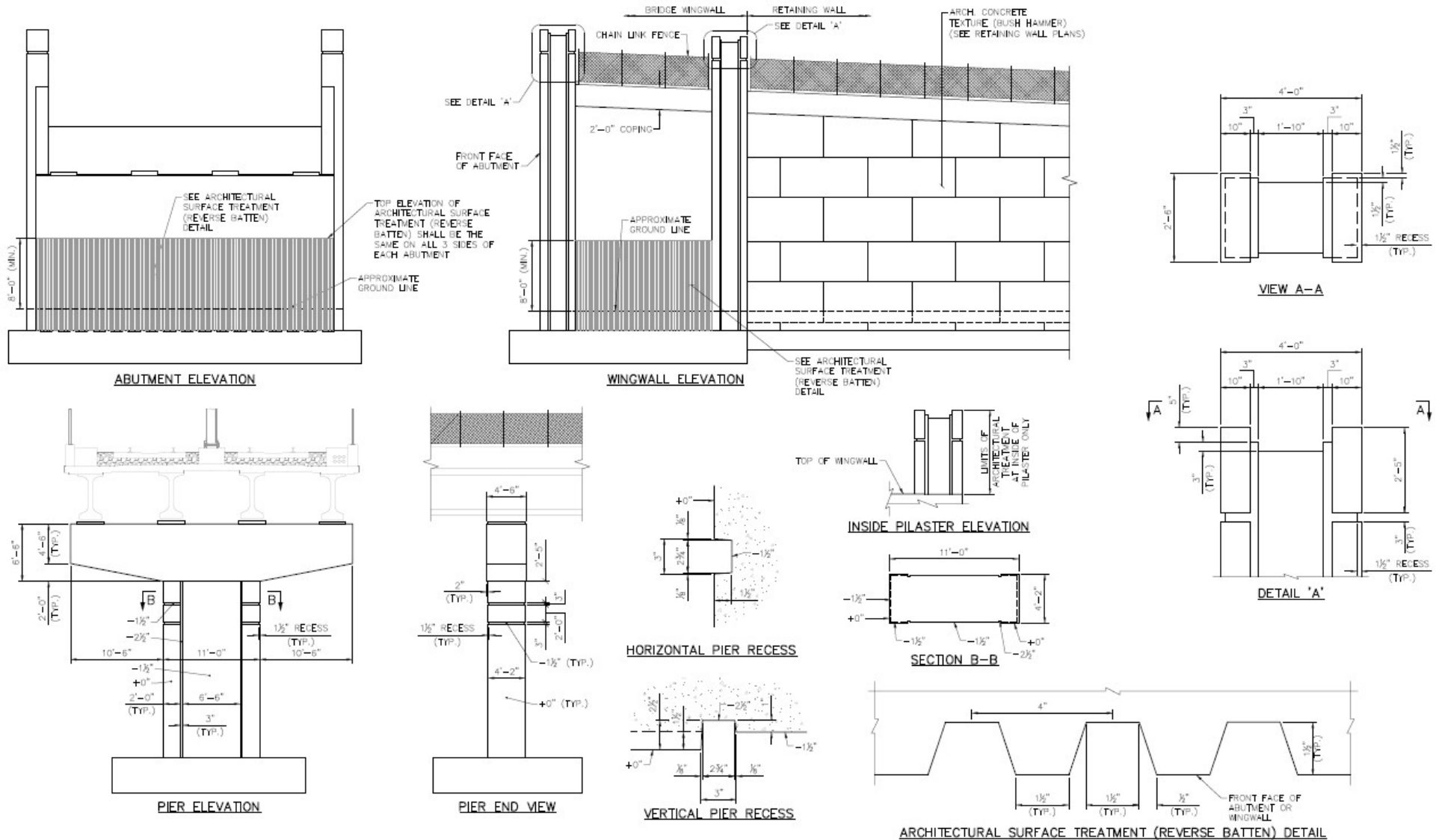
# 90% Plans – General Layout and Landscaping



# 90% Plans – General Layout and Landscaping



# 90% Plans – General Layout and Landscaping





# 90% Plans – General Layout and Landscaping



# Bass Lake Road Station – Site Design Elements

## PAVEMENT



Concrete with textured patterns

## LANDSCAPE



Forms and Textures

## FURNISHINGS



Benches

Combined option



Trash/Recycling Receptacles

Side by side option



"Hoop" option



Bicycle Loops

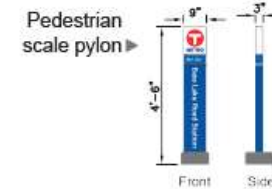
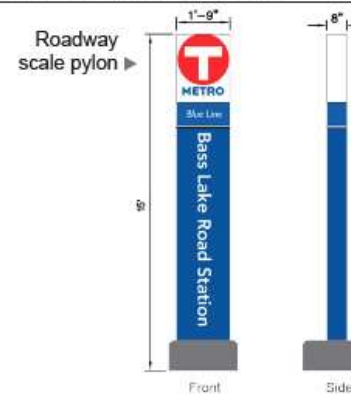
"Hitch" option



Pedestrian / Park and Ride Lighting  
(15' and 30' height)



## WAYFINDING SIGNAGE



DRAFT-WORK IN PROGRESS



**BLUE LINE LRT EXTENSION**  
CITY OF CRYSTAL  
SITE DESIGN ELEMENTS

Rev 0  
08/03/2017



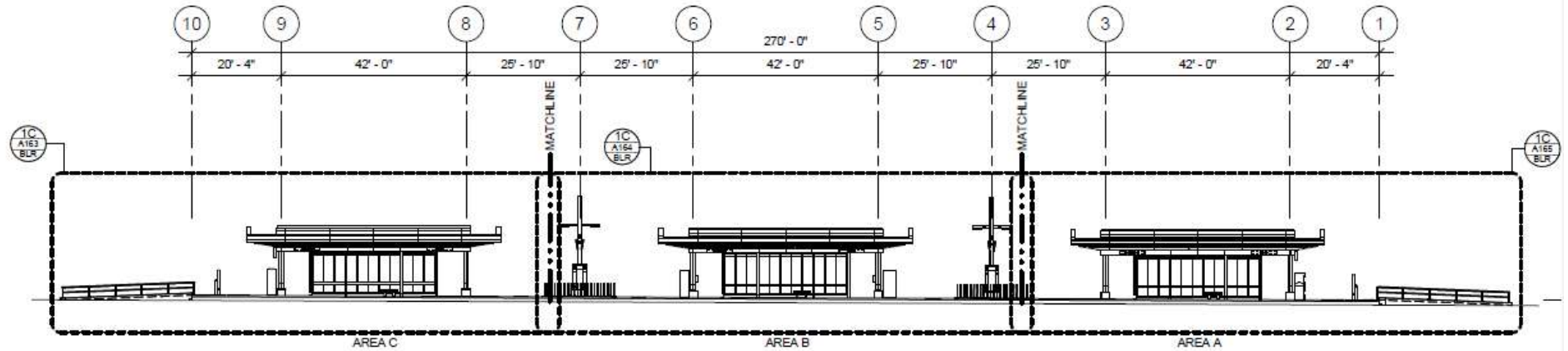
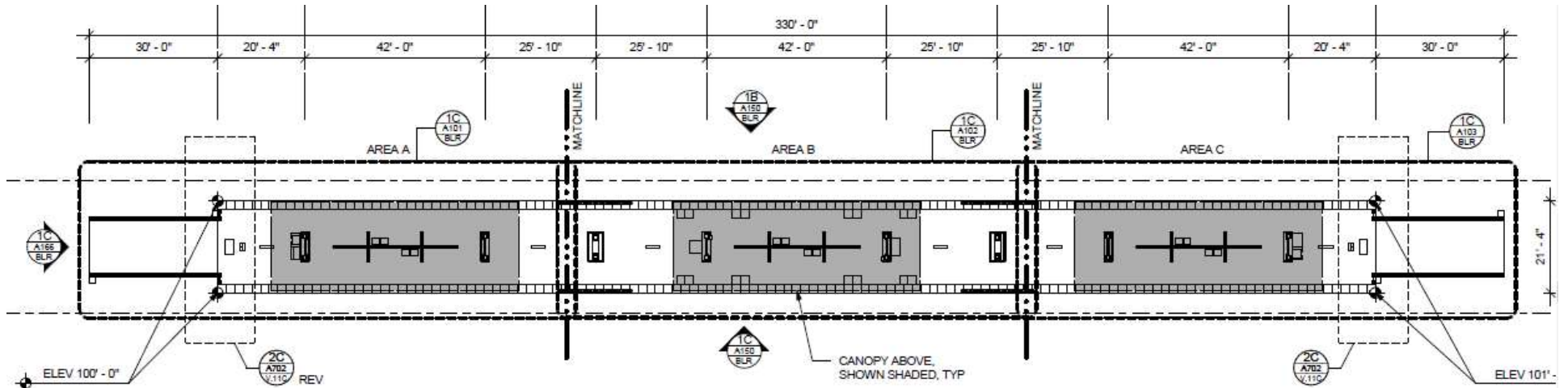
Kimley Horn

SRE miller dunwiddie  
Consulting Group, Inc. ARCHITECTS

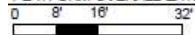
# 90% Plans – General Layout and Landscaping



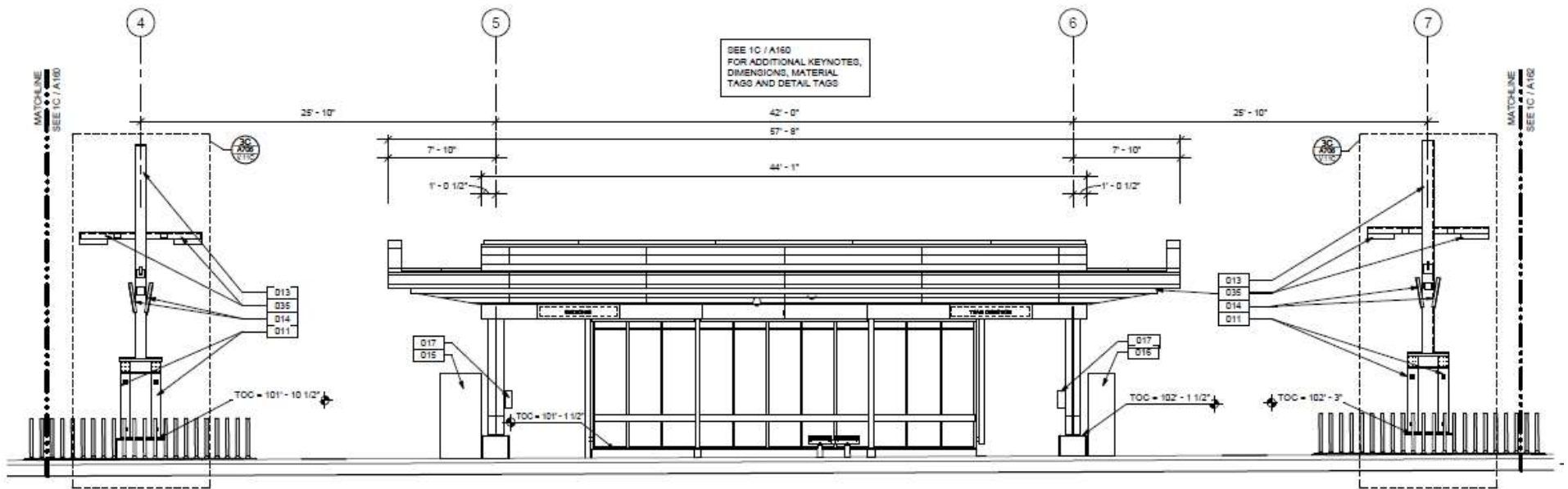
# 90% Plans – Station Platform



PLATFORM OVERALL EXTERIOR WEST ELEVATION



# 90% Plans – Station Platform (middle – “Area B”)



IC  
A161  
BLR

PLATFORM EXTERIOR EAST ELEVATION - AREA B

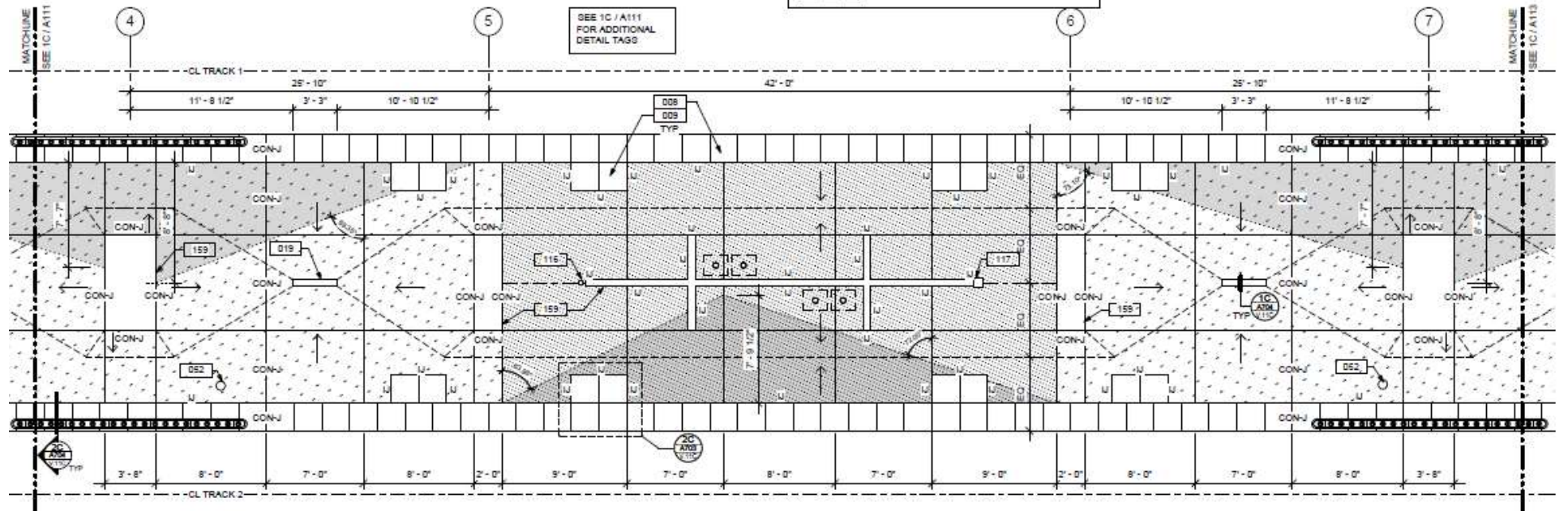
0 2 4 8  
FEET

# 90% Plans – Station Platform (middle – “Area B”)

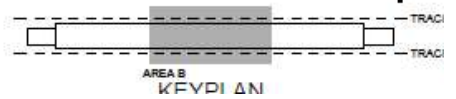
CONC FINISH LEGEND	
	DETECTABLE WARNING AT BOARDING EDGE
	CF1-A NO COLOR, LIGHT BROOM
	CF2-A DARK GRAY COLOR, LIGHT BROOM
	CF3-A TAN COLOR, LIGHT BROOM
	CF1-B NO COLOR, SANDBLAST
	CF2-B DARK GRAY COLOR, SANDBLAST
	CF3-B TAN COLOR, SANDBLAST

JOINTING LEGEND	
CJ	SAWCUT CONTROL JOINT, U.N.O. SEE 2A/A704/V.110
U	ISOLATION JOINT SEE 2A/A704/V.110
CON-J	CONSTRUCTION JOINT SEE 2A/A704/V.110
	SLOPE CONC TOPPING 1% TO DRAIN. SEE SHT A110 FOR OVERALL PLATFORM SLOPE.
	DRAINAGE GUTTER LINE
	DRAINAGE RIDGE LINE

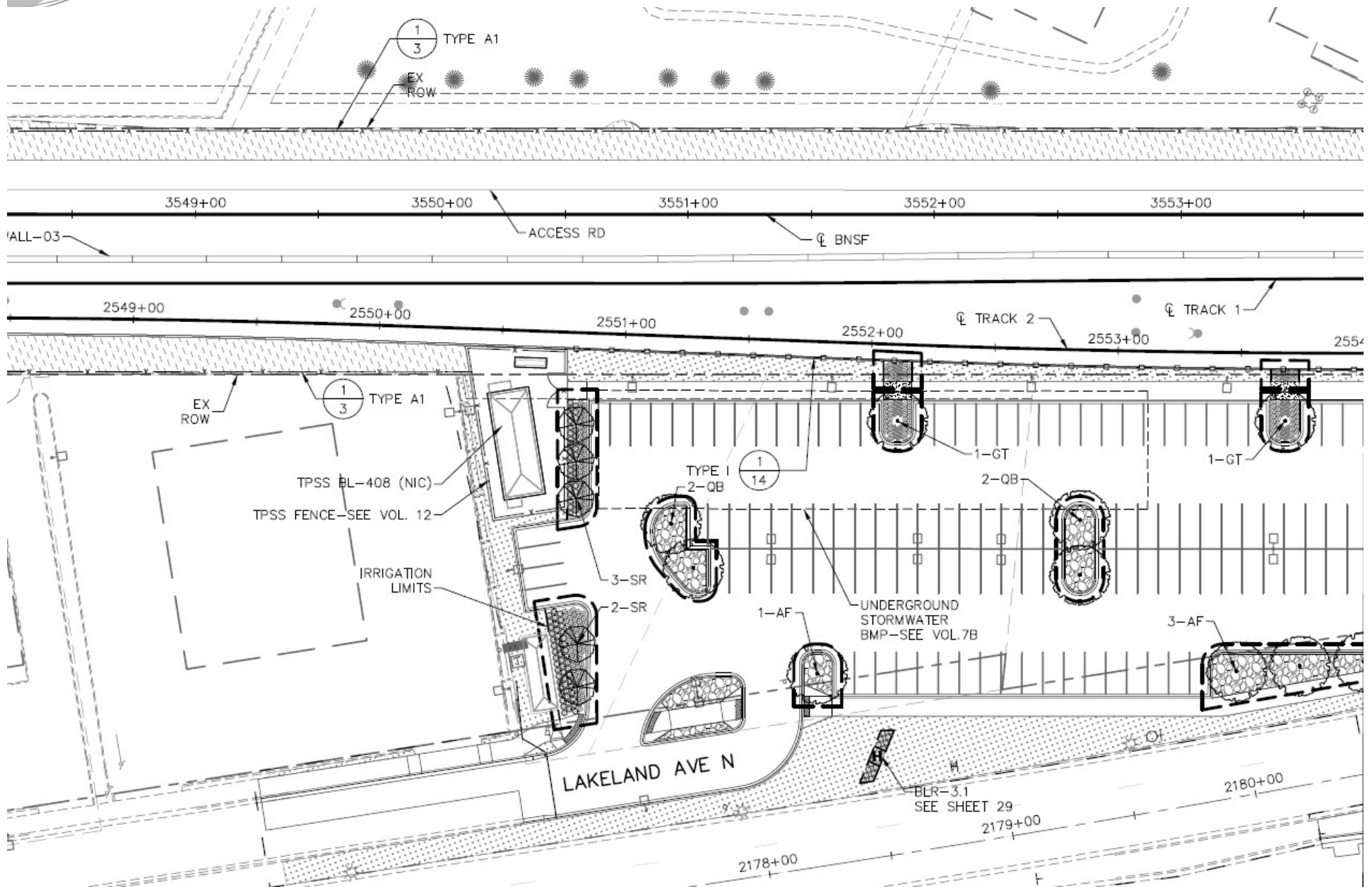
PLATFORM	
KEY	DS
008	DETECTABLE WARNIN
009	ADA DOOR POSITIONI
019	TRENCH DRAIN - SEE
052	CLEANOUT
116	ROOF DRAIN SCUPPE
117	OVERFLOW ROOF DR
159	GIP CONC CURB



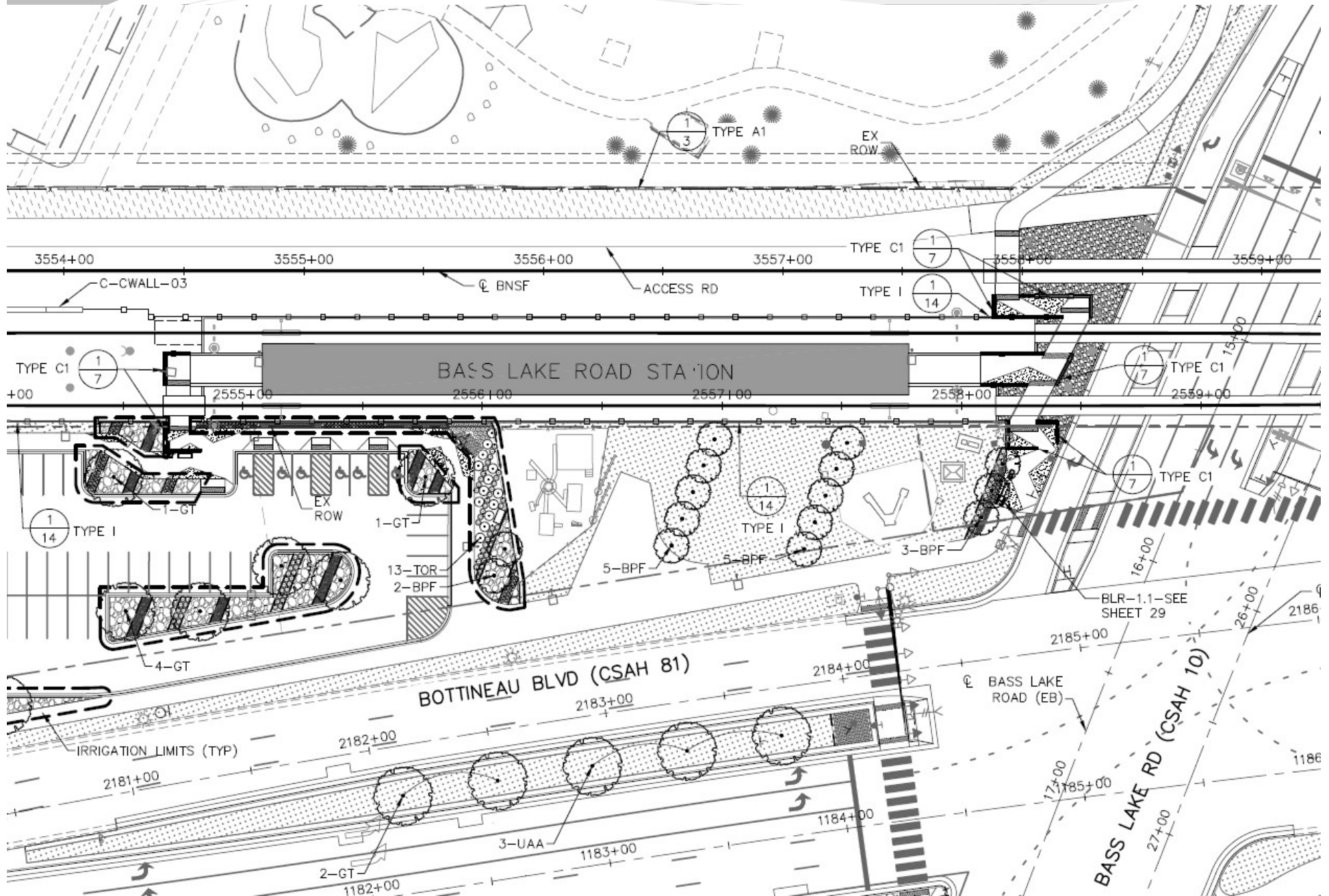
10 A113 BLR PLATFORM JOINTING AND SLOPING PLAN - AREA B  
 0 2' 4' 8'  
 FEET



# 90% Plans – General Layout and Landscaping

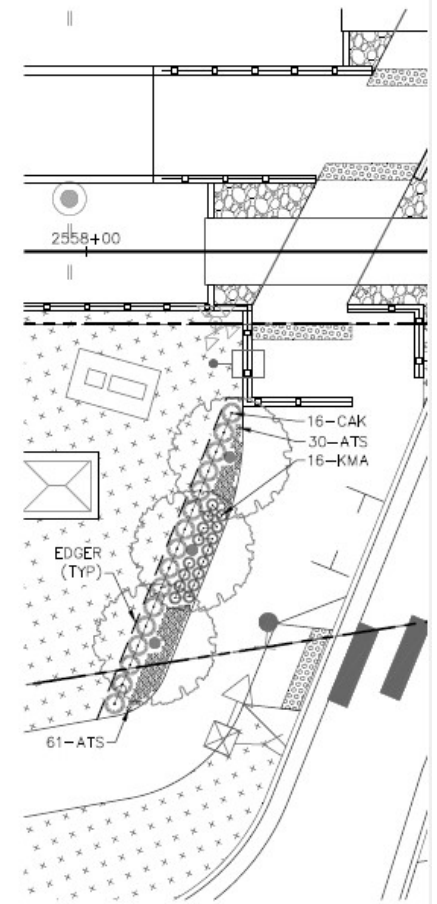
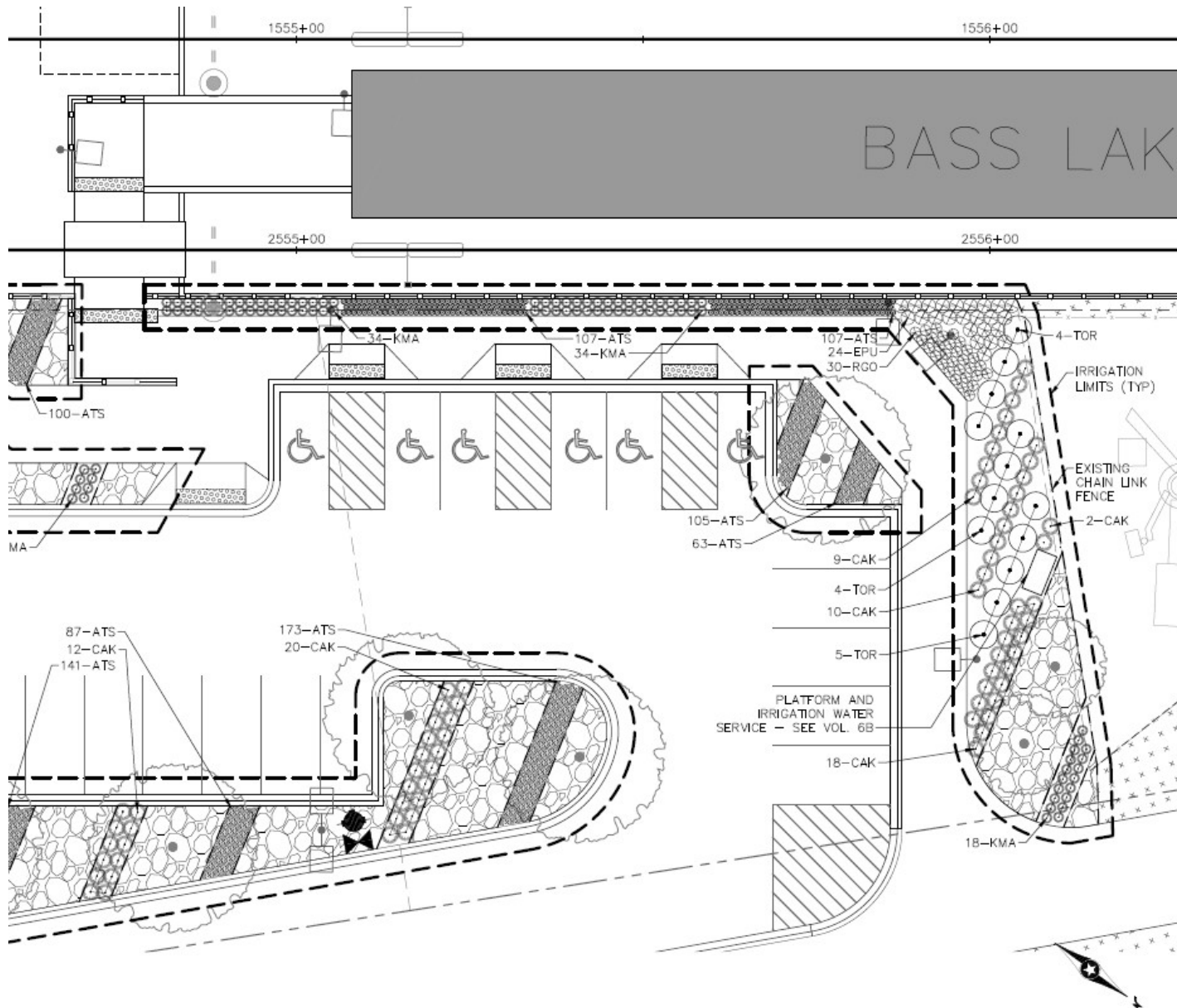


# 90% Plans – General Layout and Landscaping

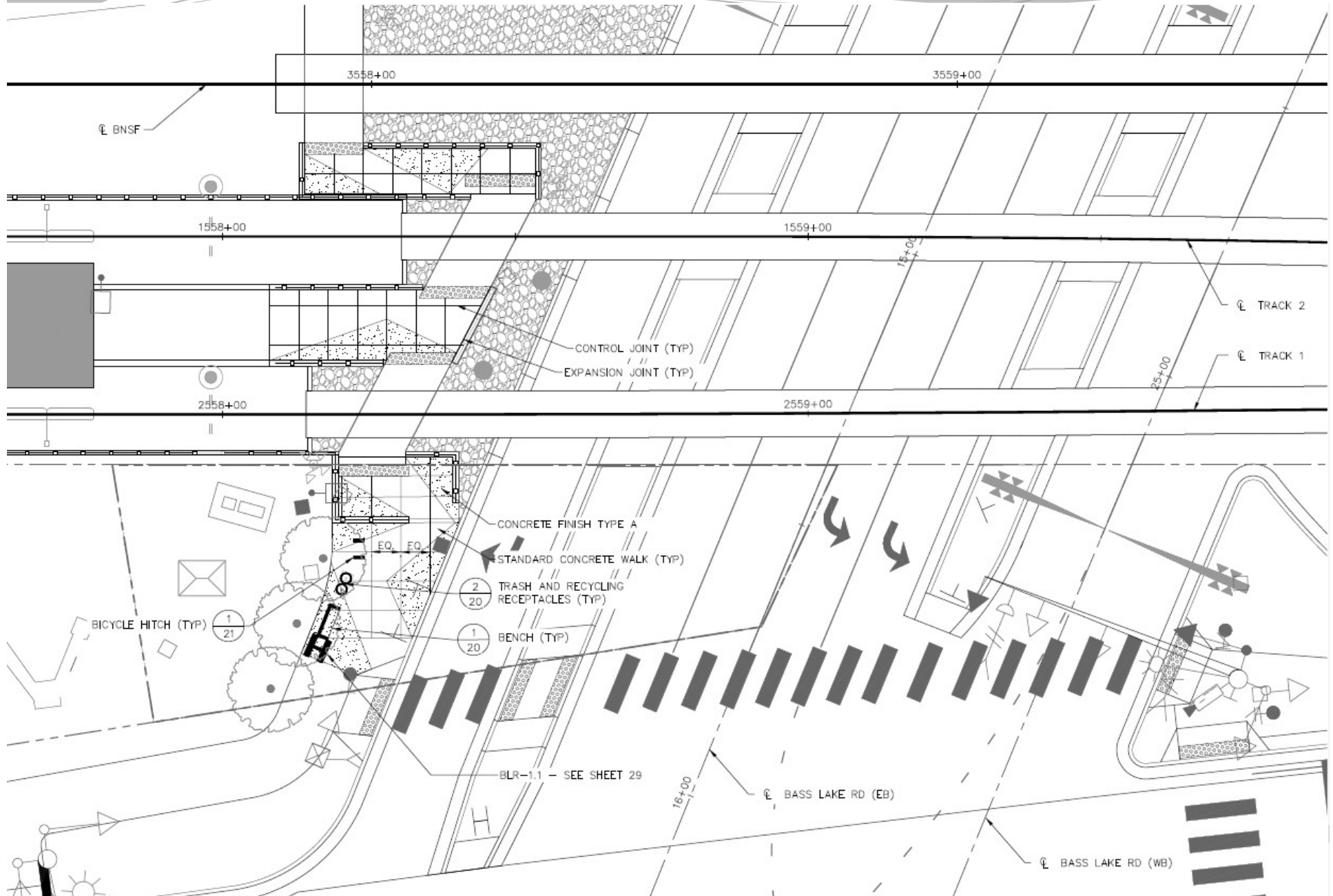




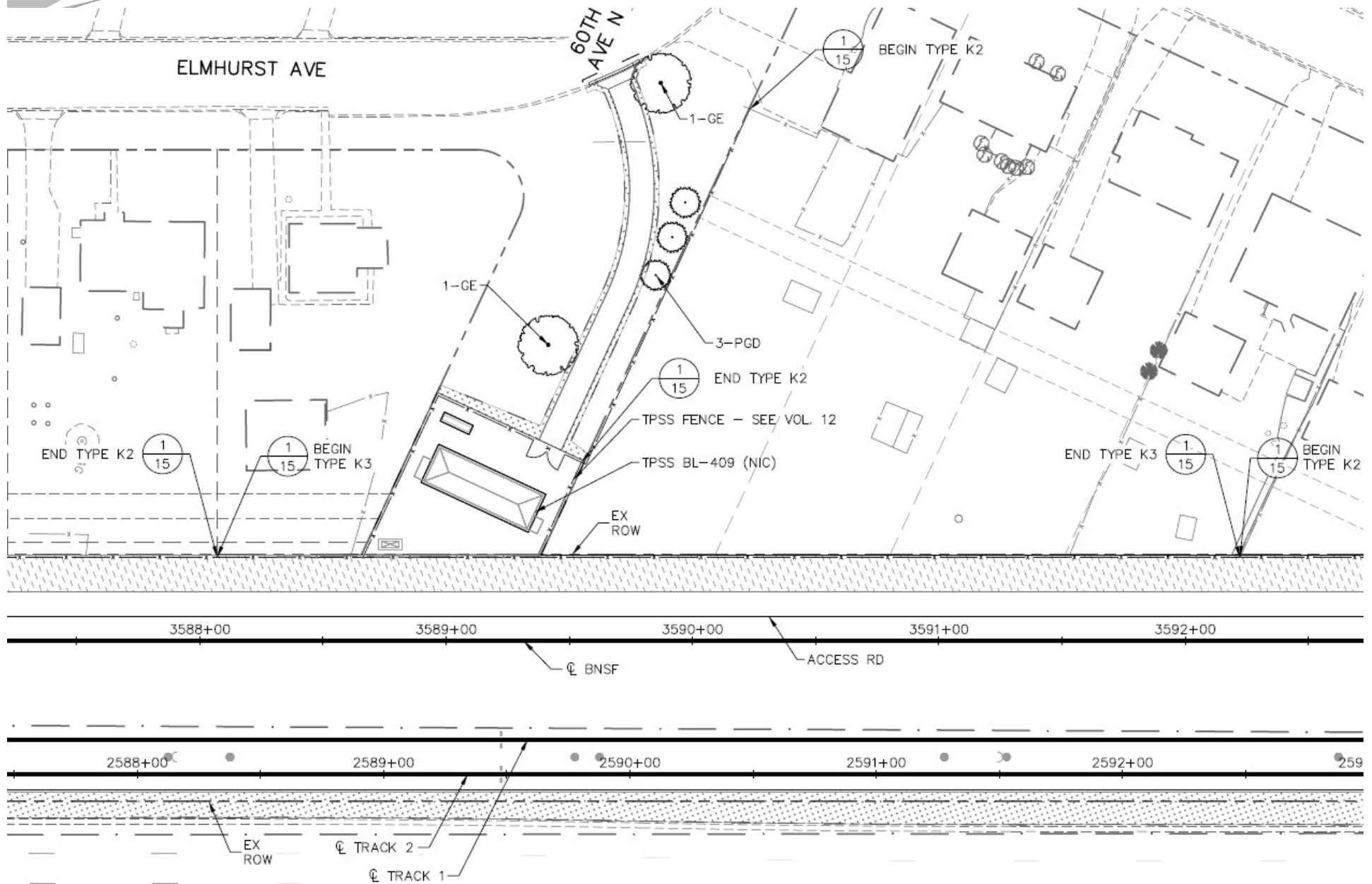
# 90% Plans – General Layout and Landscaping



# 90% Plans – General Layout and Landscaping



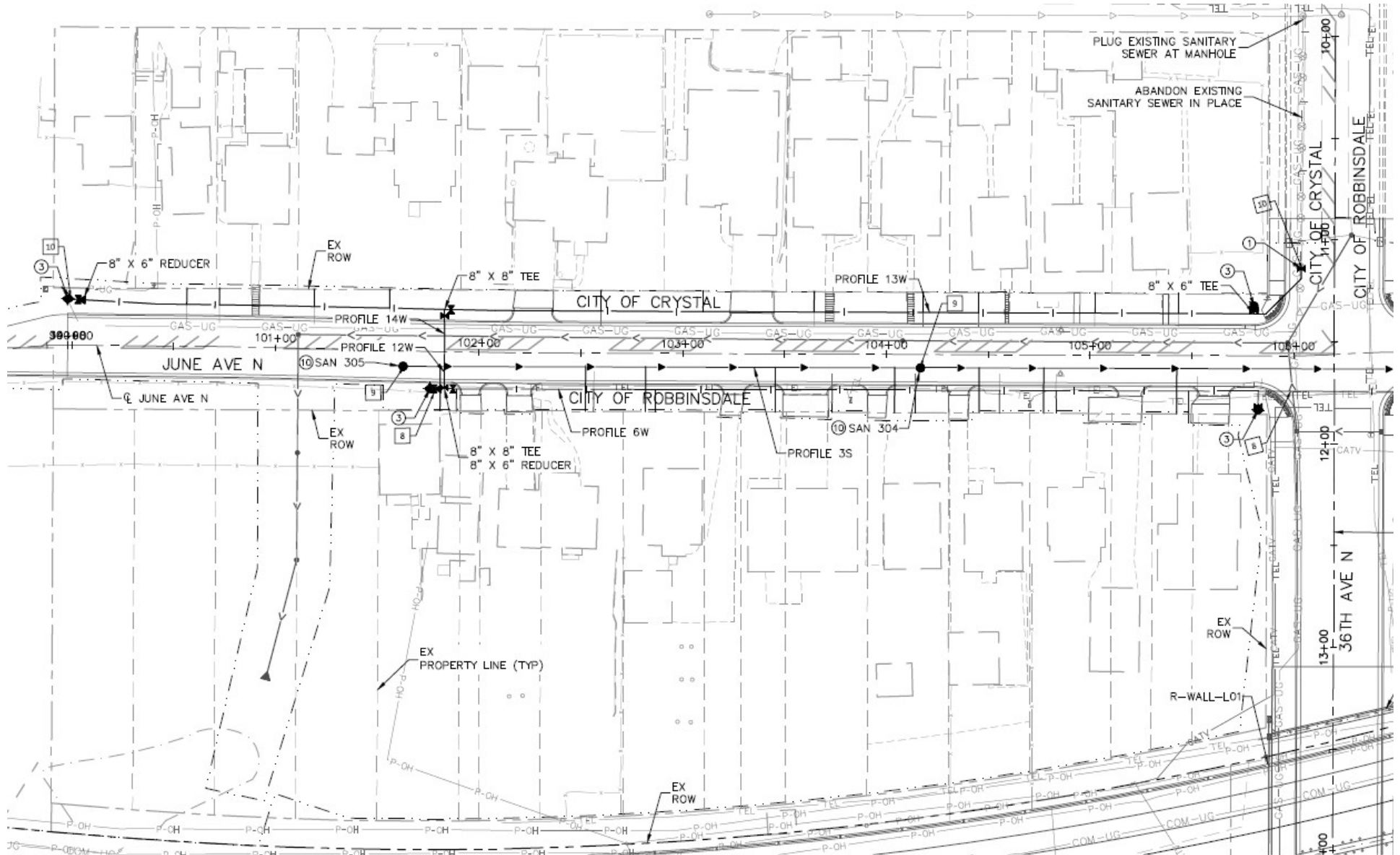
# 90% Plans – General Layout and Landscaping



# Master Funding Agreement

- Framework for:
  - Metro Transit to fund construction of a BLX facility that is part of another entity's project
    - *Not applicable in Crystal*
    - *Example: West Broadway reconstruction (Brooklyn Park/Henn Co)*
  - Another entity to fund construction of their facility that is being built as part of the BLX project
    - *Only one such facility in Crystal: June Avenue water main south of 36<sup>th</sup>*
    - *Metro Transit policy is to add a 3% fee to actual cost of city facility*
- Master Funding Agreement will be on 2/5 Council agenda
  - *Presumably without 3% fee?*
- Subordinate Funding Agreement will come later once costs are known

# Water Main Replacement June Avenue South of 36<sup>th</sup> Avenue





## **Anticipated Project Schedule**

<b>May 2018</b>	<b>Submit application to FTA for the Full Funding Grant Agreement</b>
<b>Late 2018</b>	<b>Bidding</b>
<b>2019</b>	<b>Construction Begins</b>
<b>2022</b>	<b>Line Opens for Service</b>